



NESTO SE

designed for 4K editing



NESTO SE is the entry point storage solution designed for professional 4K video editing and collaborative workflows.

Businesses today demands more powerful, reliable, and flexible storage than ever before. Traditional solutions can create massively complex storage islands that are often expensive, inefficient, and difficult to manage.

For professional broadcast quality video speed and reliability are just starting points, delivering low latency, file-level access, consistent bandwidth and easy scalability are mandatory. Until now, fulfilling these requirements at an acceptable cost was daunting if not impossible.

By contrast, NESTO SE offers a solution that combines the flexibility of unified storage, the performance and efficiency of solid state flash drives, the capacity of hard disks, the familiarity and simplified management of the NESTO HTML Web user interface, and white glove enterprise support.

NESTO SE FEATURES

Hybrid Storage Pools

Solid-state performance at spinning-disk capacity and cost. NESTO NAS merges multi-layer non-volatile cache with high-density spinning disks. System RAM and flash memory are used to cache reads and writes while HDDs store the data resulting in an increased of performance and capacity scalability.

Self-Healing File System

Data is verified and repaired in the cache before it ever reaches the disks. Data degradation on the disks is identified and repaired, forever preserving data as the first day.

Snapshots & Replication

Out-of-the-box file version and restoration. Data is protected against unintentional alteration and can be bidirectionally replicated for backups or disaster recovery.

Thin and Thick Provisioning

Define multiple datasets and distribute free space dynaically using quotas or rather reserve space for each dataset.

Hot-swap & Dual Power Supplies

Hot-swap front-loading drive bays and redundant power supplies.

Scalability

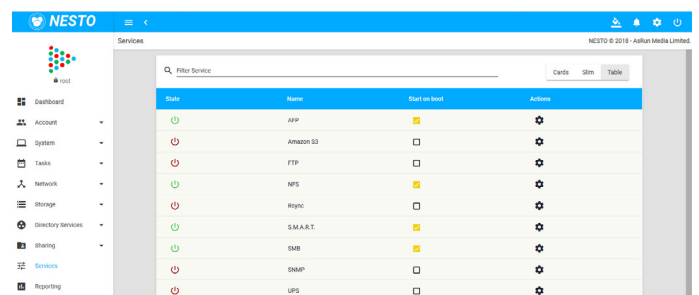
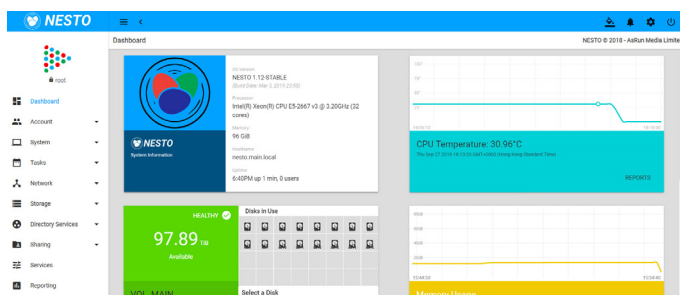
The NESTO SE series can be expanded up to half a PB without service interruption with the NESTO X24 expansion units.

Web based Admin Software

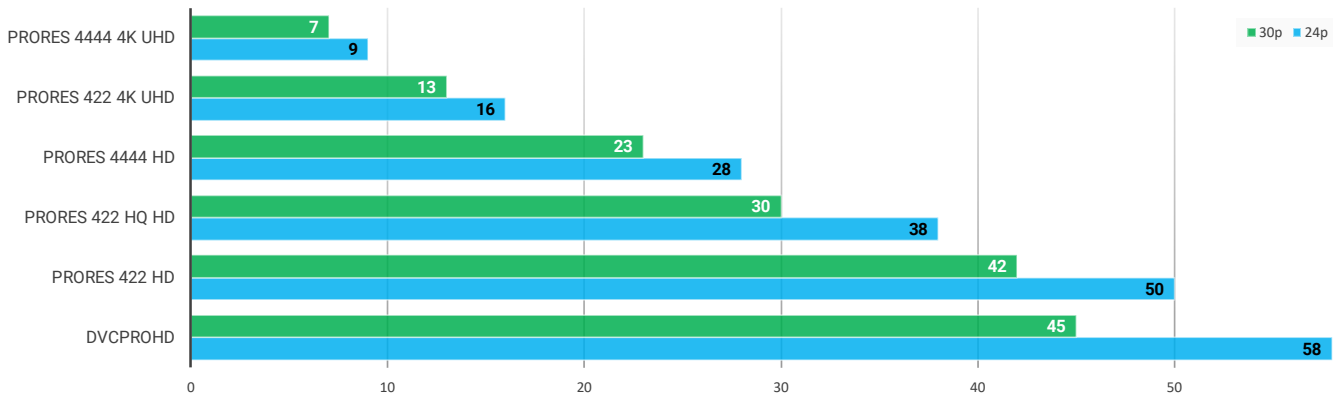
Streamlined HTML Web interface that provides simple management of the system

Multiple storage services

A full range of file, block, and object protocols including NFS, CIFS/SMB, AFP, FTP and Simple Storage Service (S3).



NESTO SE PERFORMANCE - STREAM COUNT*



*Based on NESTO SE configured with 16 SAS Enterprise HDD and 280GB boost flash cache.
Higher count performance available with the addition of NESTO X24 expansion units.

NESTO SE SPECIFICATIONS

HARDWARE SYSTEM



Processors	Intel® Xeon® Octa-core @3.2Ghz
Cache	64GB to 256TB
Write Flash Cache	280GB
OS boot	2 x 32GB mirrored Solid State
LAN Interface	2 x 10Gbps SFP+, 2 x 1Gbps
IPMI	IPMI 2.0 with virtual media over LAN
Other Ports	2 x USB front, 2 x USB rear and 1 x VGA
Expansion ports	2 x 12 Gbps SAS ports
Capacity	66 TB to 768 TB RAW, 48 TB to 537 TB effective in RAID 50.
Disk trays	16 disk bays, expandable up to 64
RAID	0, 1, 10, 5, 6, 50, 60, RTP
Available drives	7.2k RPM: 4 TB, 6 TB, 8 TB, 10 and 12 TB SSD: 250GB/400GB/500GB/800GB/1TB/ 1.6TB/1.92TB/2TB
Disk trays	16 disk bays
Disk Management	Hot-Swappable drives Bad Block Scan + HDD S.M.A.R.T. Enclosure Monitoring and Alert LEDs
Power Supplies	Dual redundant hot-swappable 800W
AC Input	100-240 V, 50-60 Hz, 5.5-2.28 Amp
Power Management	UPS Signal Response and Alerts and Remote power-on/off
Dimensions HxWxD	3.5"x17.6"x26.6" (88x448x675mm)
Certifications	CE, FCC and RoHS Compliant
Operating Temp.	10°C to 35°C (50°F to 95°F)
Operating RH.	30% to 90%

FILE SYSTEM

Data preservation	Self-healing file system
Enhanced performance	In-line deduplication Intelligent in-line compression
Data protection	Snapshots and clones
Scalability	Online capacity expansion
Provisioning	Thin and Thin provisioning

SERVICES

Shared File-based protocols	CIFSv1, SMBv2/v3, NFSv3/v4 and AFP
Object-Based protocols	S3-Compatible REST API
Directory Services	Active Directory (AD), Kerberos, LDAP, Apple Open Directory, and NIS
Networking	Port Trunking/NIC Teaming and IEEE 802.3ad Link Aggregation VLAN Support DHCP Client and Server
Local protection	Snapshots and clones
Data Replication	Bidirectional remote replication between NESTO Rsync with third-party systems

MANAGEMENT

User Interface	HTTP/HTTPS Web Interface
Monitoring	SNMP server/MIB E-mail Alerts Resource Monitor Log and Event Collection Remote Syslog Client
Remote interface	Remote management via LAN
Settings	Network services File system services Backup & Restore System